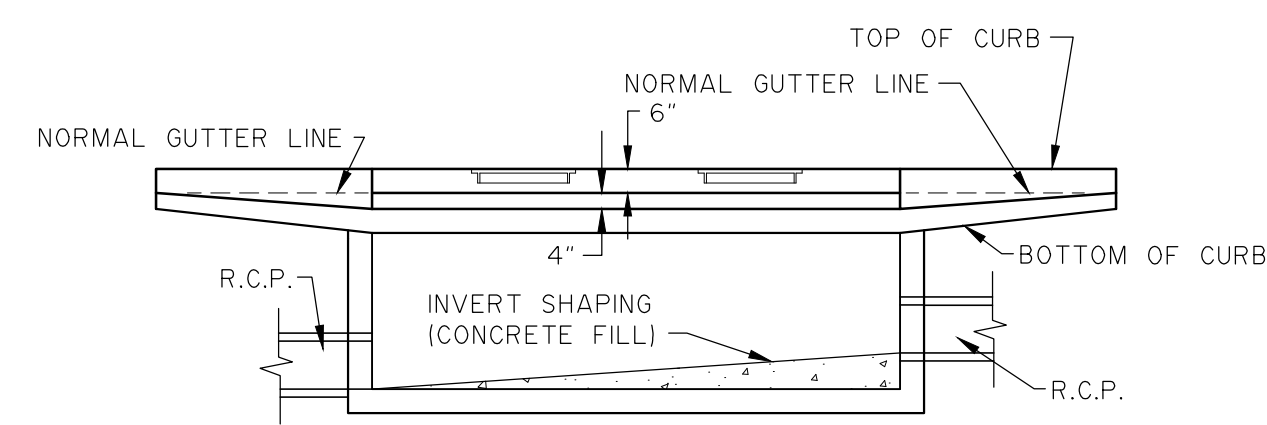


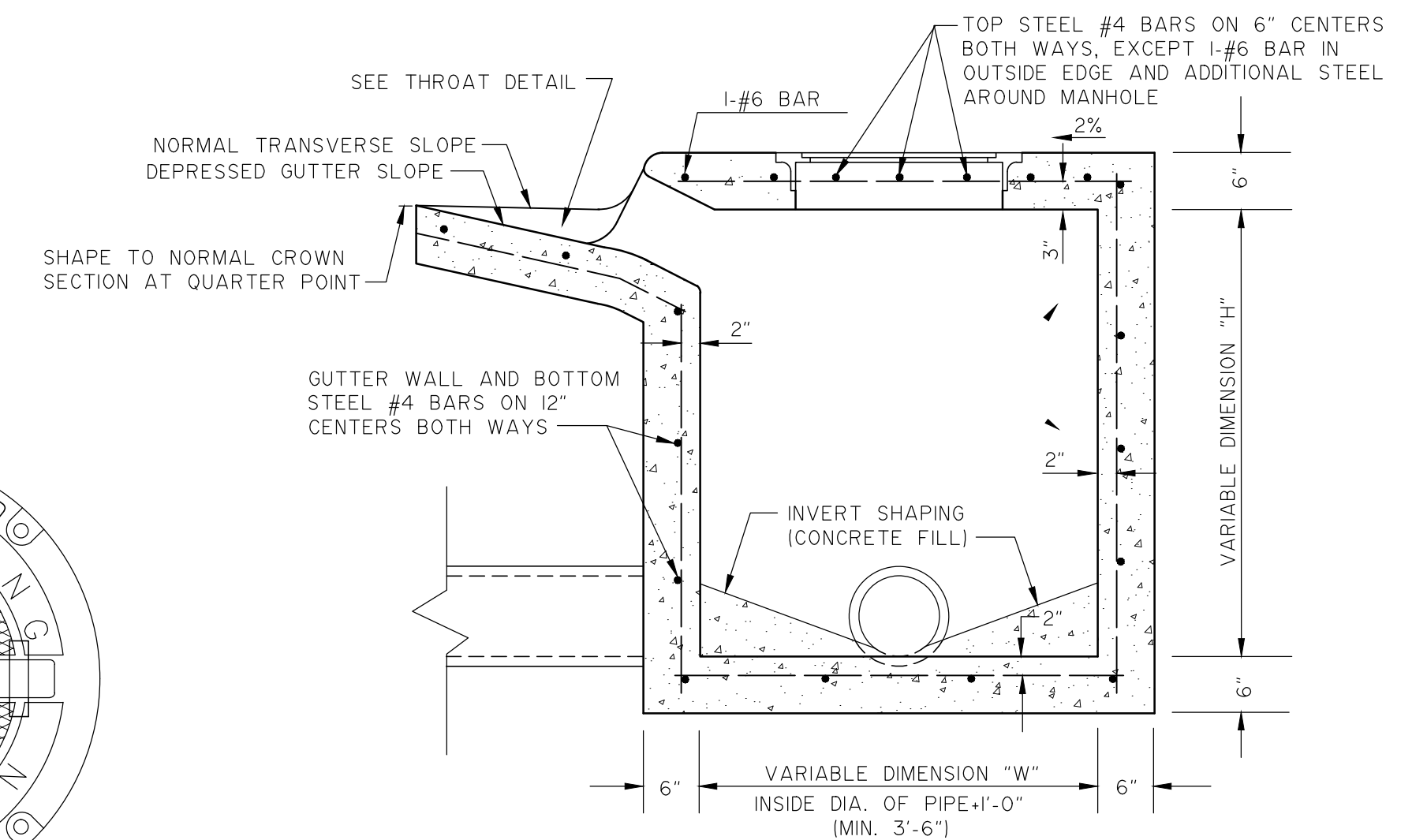
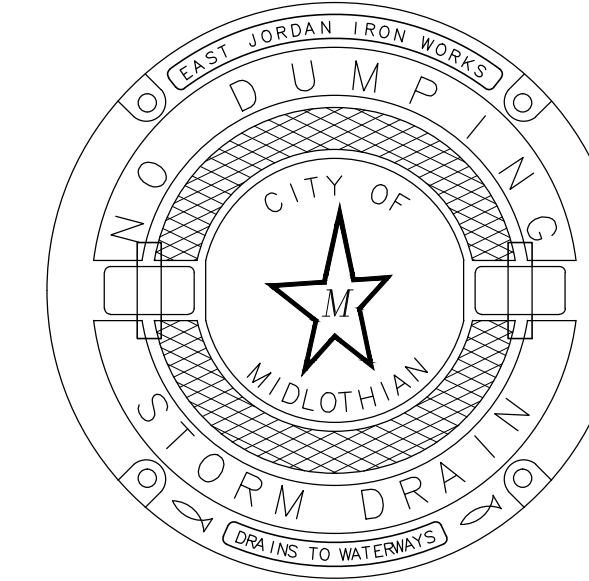
- NOTES:**
1. TOP OF INLET TO SLOPE 2% TOWARDS STREET.
 2. REINFORCING STEEL LAYOUT APPLICABLE TO BOTH RECESSED AND ON-GRADE CURB INLETS.

1 CENTER SUPPORT BEAM FOR 15' & 20' RECESSED AND STANDARD INLETS
N.T.S.



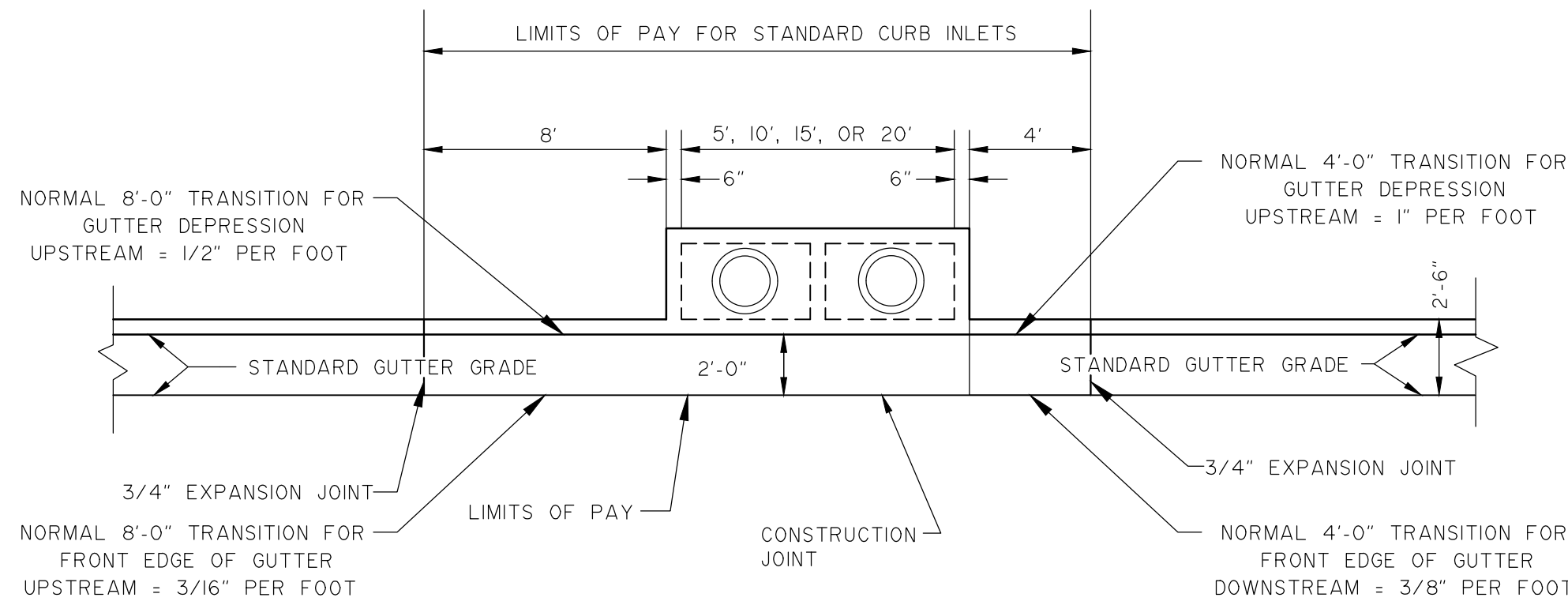
- NOTE:**
MANHOLE TO BE PLACED AT LOW END OF INLET. TWO MANHOLES ARE REQUIRED ON 15' AND 20' INLETS ONLY IF THE INSIDE HEIGHT OF THE INLET IS LESS THAN 4 FEET.

2 ELEVATION RECESSED AND STANDARD INLET
N.T.S.



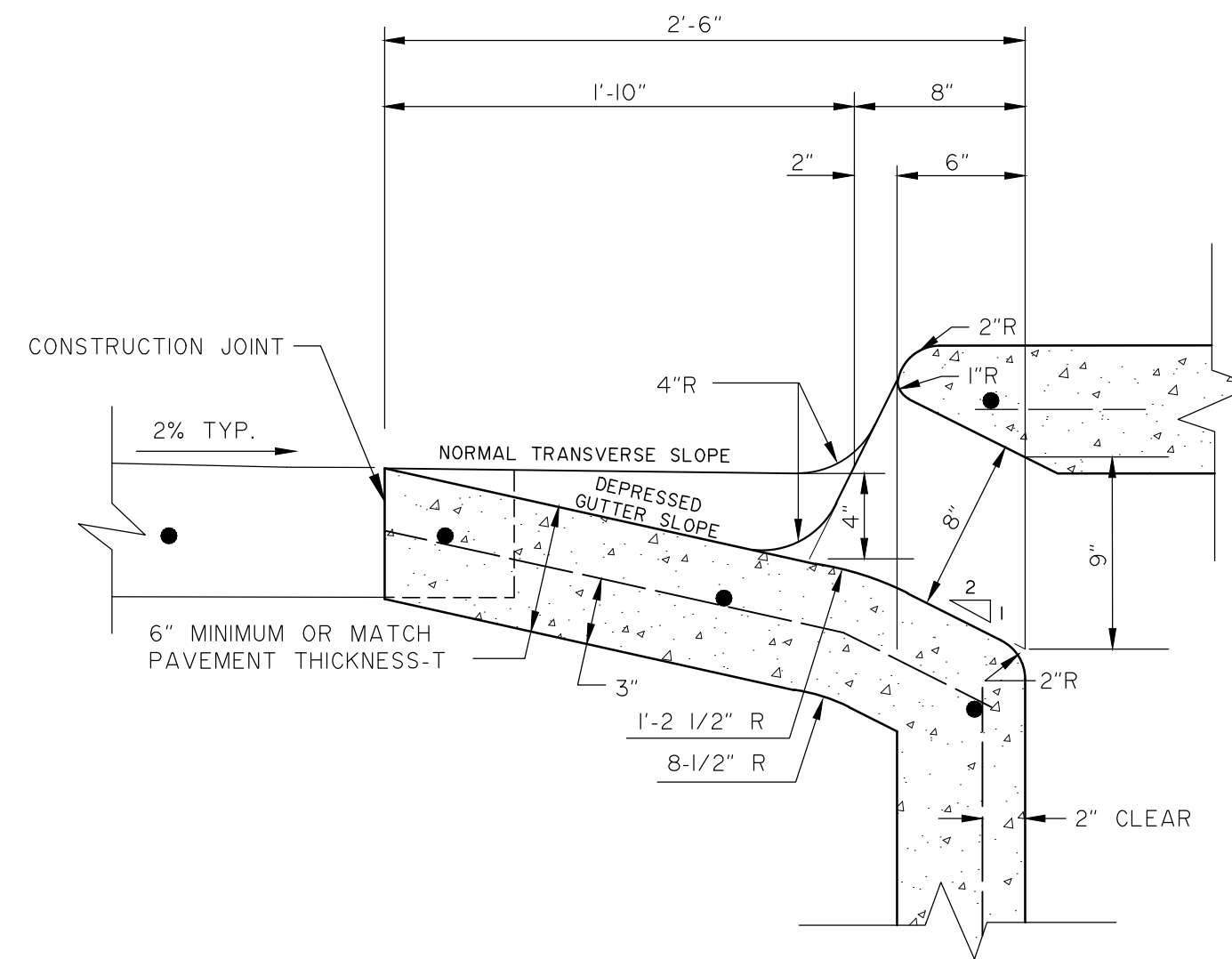
- NOTE:**
TOP OF INLET TO SLOPE 2% TOWARDS STREET.

4 INLET SECTION FOR RECESSED AND STANDARD INLETS ON CONCRETE STREETS
N.T.S.



- NOTES:**
1. TOP OF INLET TO SLOPE 2% TOWARDS STREET.
 2. TWO MANHOLES REQUIRED FOR 15' AND 20' INLETS IF THE INSIDE DEPTH IS LESS THAN 4 FEET.
 3. CENTER SUPPORT BEAM REQUIRED FOR 15' AND 20' STANDARD CURB INLETS.
 4. #4 BARS DOWELLED INTO INLET ON 18" CENTERS WHERE SIDEWALK IS ADJACENT TO INLET.
 5. ADDITIONAL STEEL TO BE PLACED AROUND MANHOLE OPENING.

5 STANDARD CURB INLET PLAN
N.T.S.



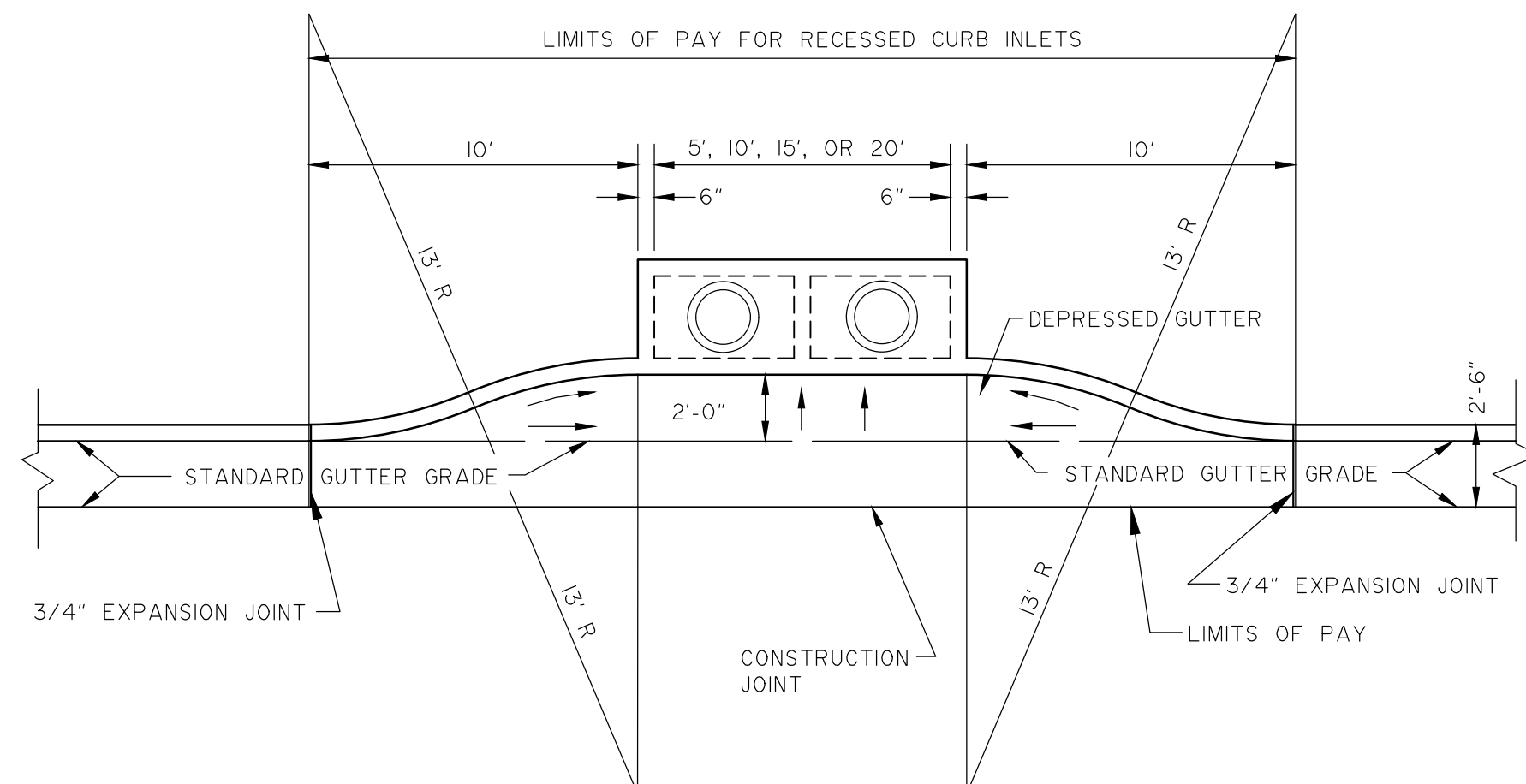
6 THROAT DETAIL FOR STANDARD INLETS ON CONCRETE STREETS
N.T.S.

- NOTE:**
MANHOLE COVER AND FRAME SHALL BE EAST JORDAN IRON WORKS, INC. NO. 184L APT AND 184L ZPT. LOCAL SUPPLIER IS BASS & HAYS FOUNDRY, INC., GRAND PRAIRIE, TEXAS.

3 MANHOLE DETAIL
N.T.S.

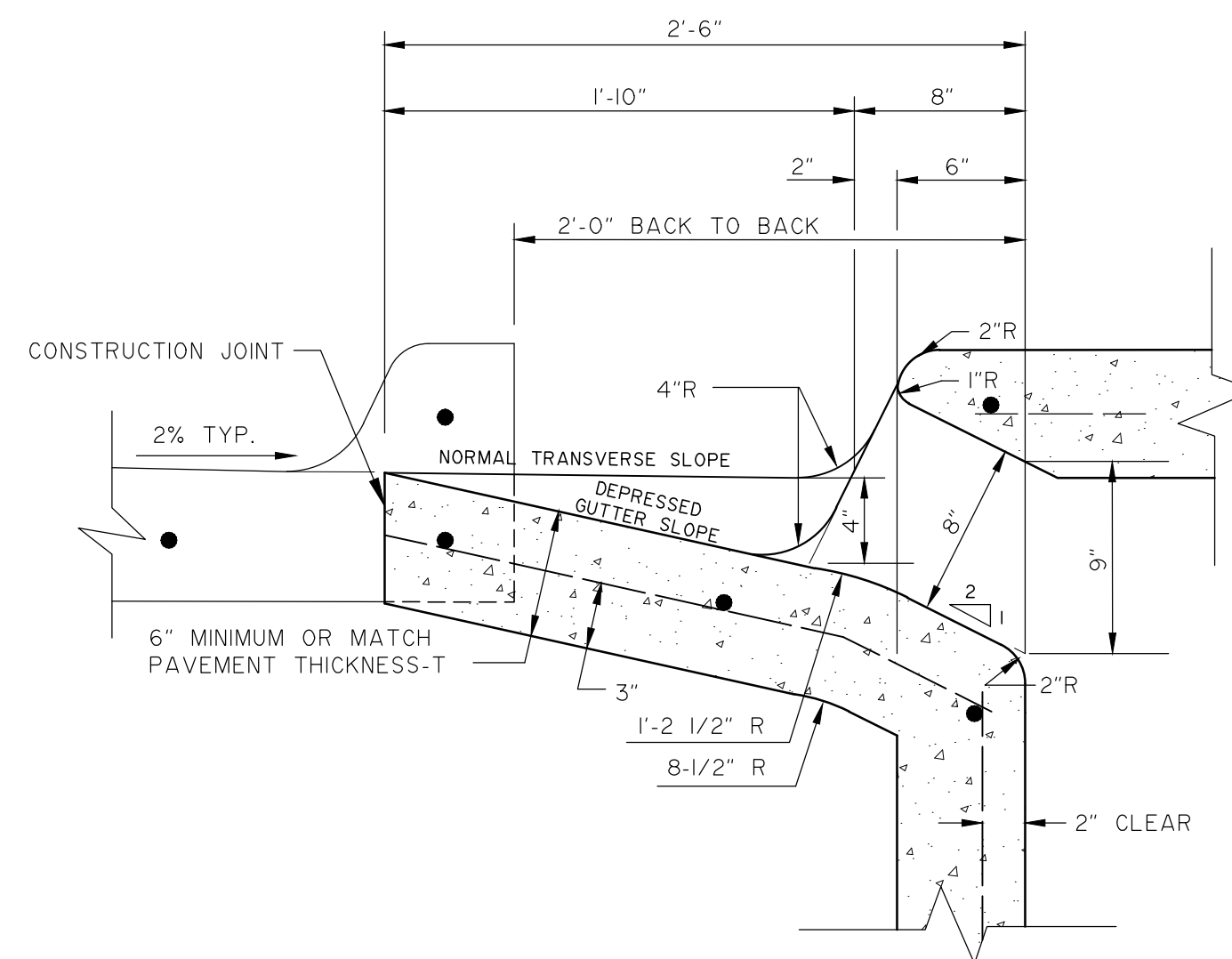
7 GENERAL NOTES
N.T.S.

1. ALL CONCRETE SHALL BE CLASS "A" (5 BAGS OF CEMENT PER C.Y. & A MINIMUM COMPRESSIVE STRENGTH OF 3,000 P.S.I. AT 28 DAYS).
2. ALL REINFORCING STEEL SHALL BE NEW BILLET STEEL CONFORMING TO ASTM A-615.
3. CHAMFER ALL EXPOSED CORNERS 3/4" EXCEPT WHERE OTHERWISE NOTED.
4. DIMENSIONS RELATING TO REINFORCING STEEL ARE TO CENTERS OF BARS.
5. FIELD CUT AND BEND BARS AS NECESSARY TO ACCOMMODATE STORM SEWER PIPE.
6. ALL REINFORCING STEEL SHALL HAVE A MINIMUM COVER OF 2".
7. RECESSED CURB INLETS SHALL BE REQUIRED ON ALL ARTERIAL AND COLLECTOR STREETS.
8. ROCK FOUNDATION SHALL BE USED DURING PREFABRICATED INLET BOX INSTALLATION. 6" FOR BACKFILL WITH FLOWABLE FILL TO FILL VOIDS OR COMPACT WITH SELECT SURPLUS EXCAVATION COMPACTED IN 8" LIFTS TO 95% STANDARD PROCTOR DENSITY.
9. STANDARD INLETS SHALL BE ALLOWED ON RESIDENTIAL STREETS ONLY. RECESSED INLETS ARE REQUIRED ON ALL OTHER ROADWAYS.
10. STANDARD CURB INLET SIZES ARE 5', 10', 15', OR 20'. NO OTHER SIZES WILL BE ALLOWED WITHOUT APPROVAL FROM CITY ENGINEER.



- NOTES:**
1. TOP OF INLET TO SLOPE 2% TOWARDS STREET.
 2. TWO MANHOLES REQUIRED FOR 15' AND 20' INLETS IF THE INSIDE DEPTH IS LESS THAN 4 FEET.
 3. CENTER SUPPORT BEAM REQUIRED FOR 15' AND 20' STANDARD CURB INLETS.
 4. #4 BARS DOWELLED INTO INLET ON 18" CENTERS WHERE SIDEWALK IS ADJACENT TO INLET.
 5. ADDITIONAL STEEL TO BE PLACED AROUND MANHOLE OPENING.

8 RECESSED CURB INLET PLAN
N.T.S.



9 THROAT DETAIL FOR RECESSED INLETS ON CONCRETE STREETS
N.T.S.

NOTE: THIS IS SHT. SD-9 OF THE STANDARD CONSTRUCTION DETAILS, ORDINANCE NO. 2013-51 EFFECTIVE DATE: JANUARY 1, 2014

CITY OF MIDLOTHIAN, TEXAS
DEPARTMENT OF ENGINEERING,
UTILITIES, AND PUBLIC WORKS

STANDARD CONSTRUCTION DETAILS
STORM DRAINAGE

CURB INLET DETAILS



NO.	REVISION	DATE	SHEET
			SD-9