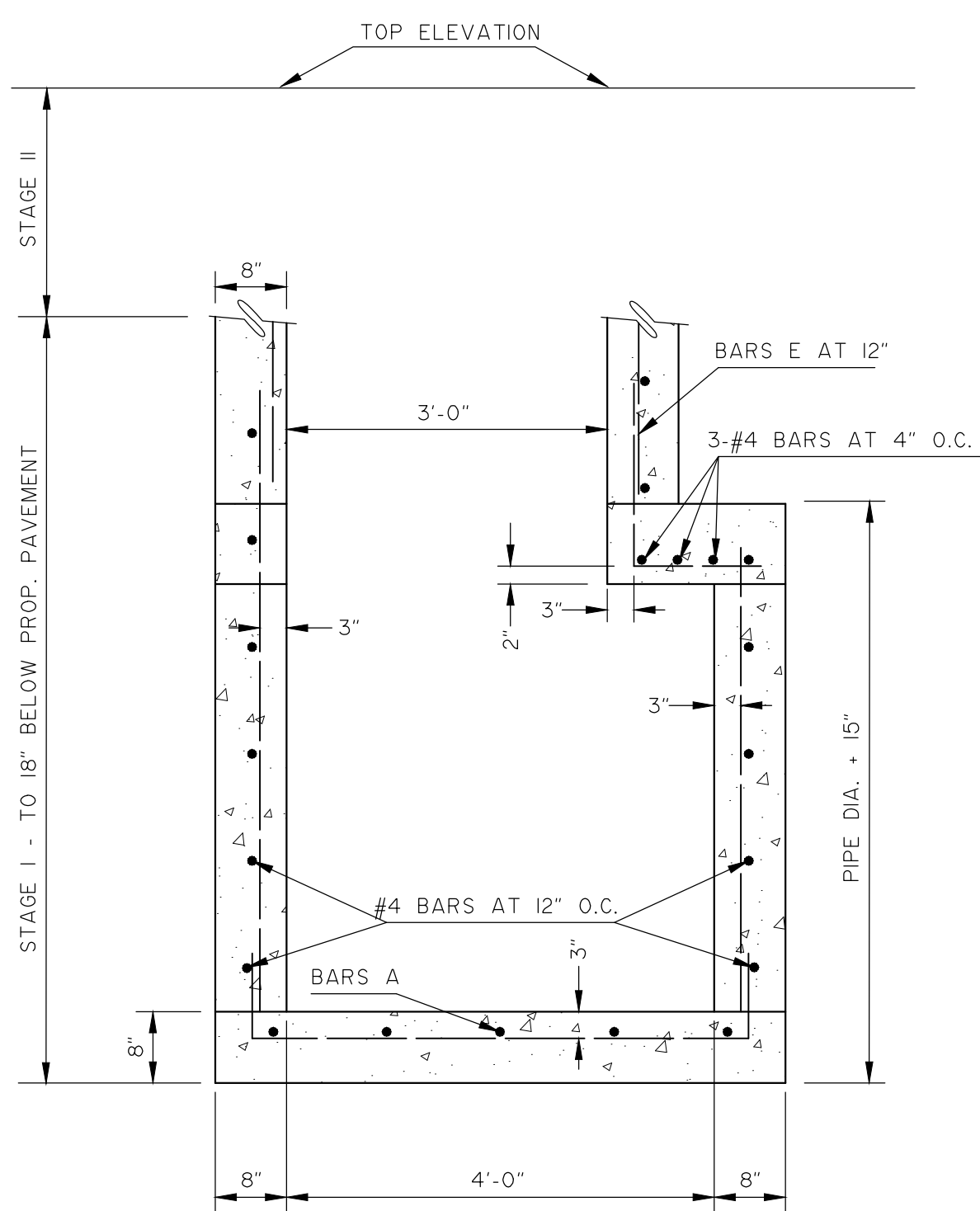
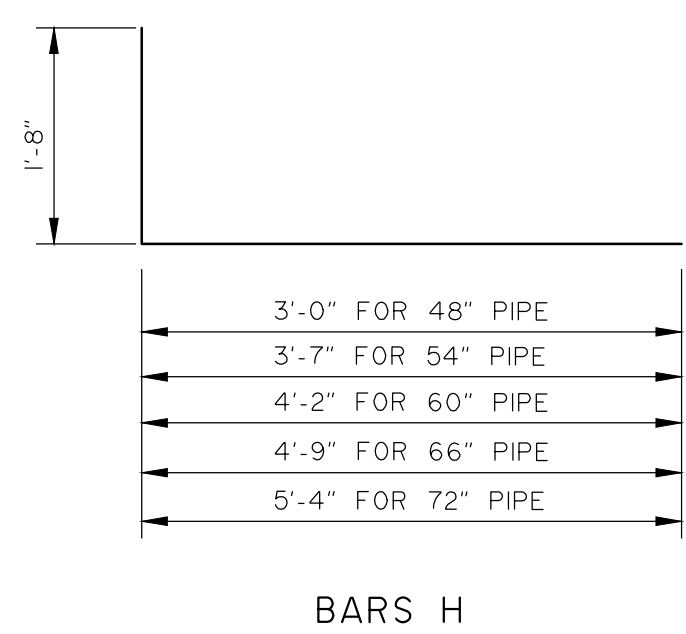
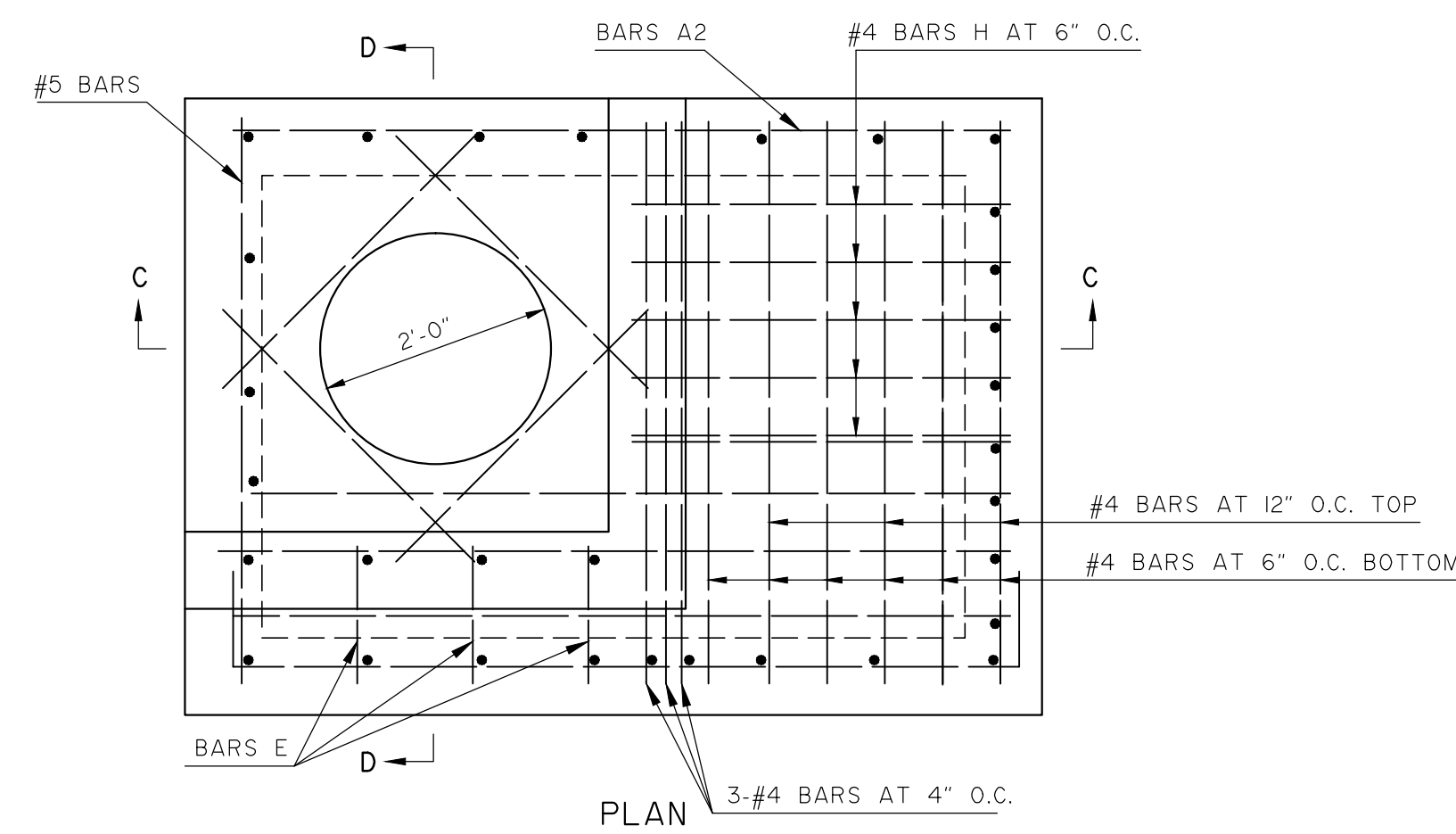
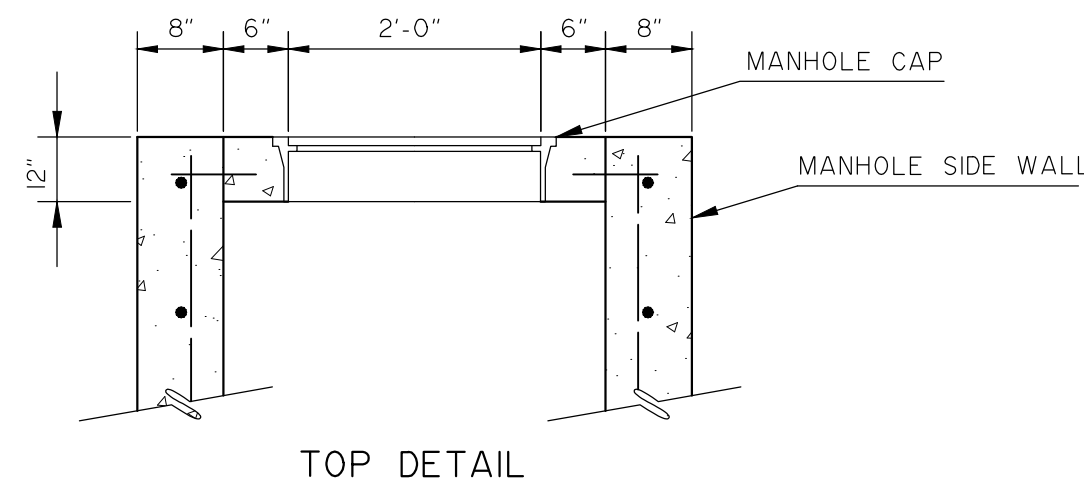


NOTES:

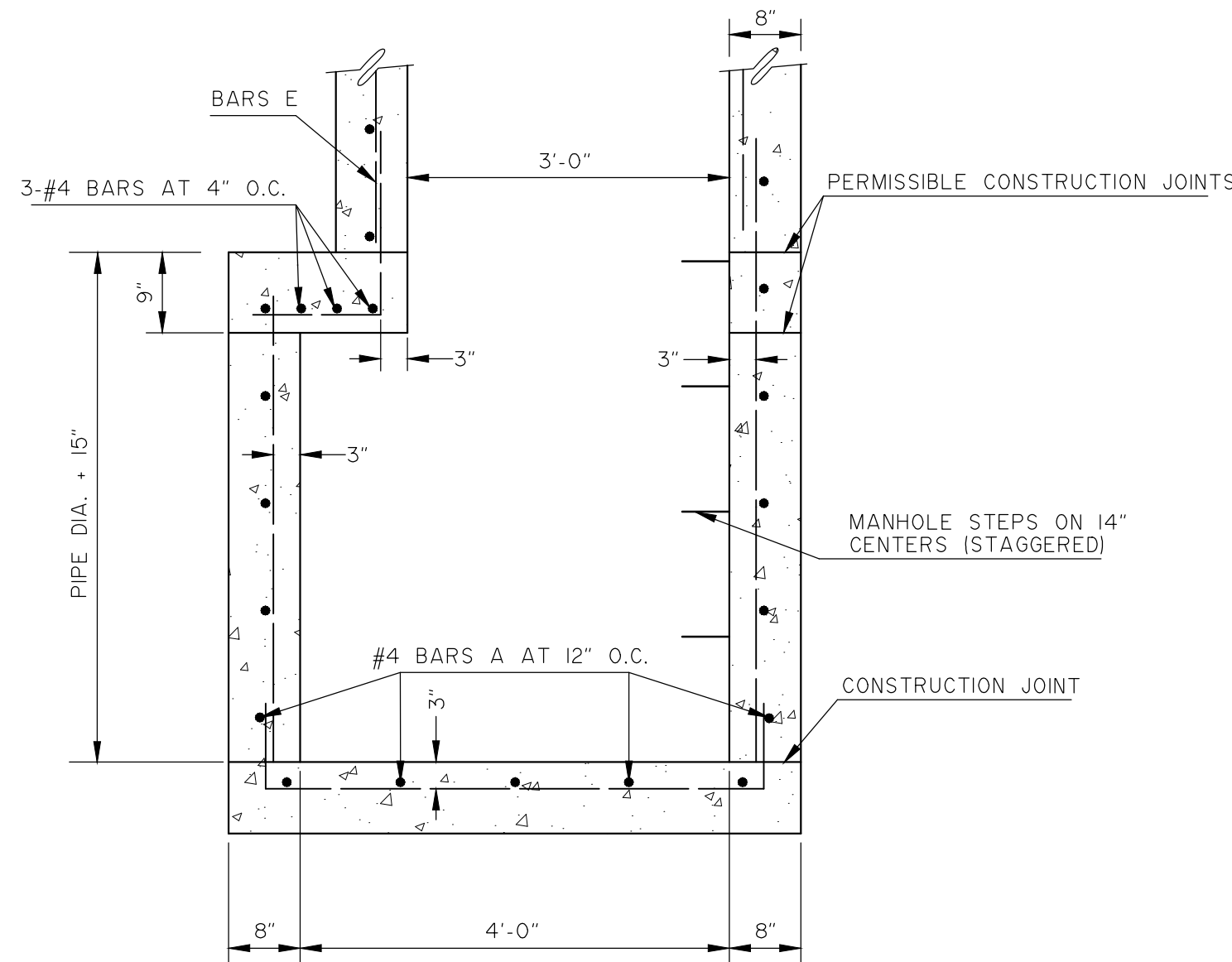
- 2-#4 BARS TO EXTEND INTO MANHOLE CAP 4" AND SIDE WALL 6" PER SECTION [3" COVER BETWEEN BARS AND BETWEEN EDGE OF CONCRETE.] THESE BARS ARE TO BE SPACED ON 6" O.C. AROUND ENTIRE MANHOLE RING AND COVER.
- STAGE II CONSTRUCTION OF THE MANHOLES WILL NOT BE BUILT UNTIL PAVEMENT PREPARATIONS ARE COMPLETE.



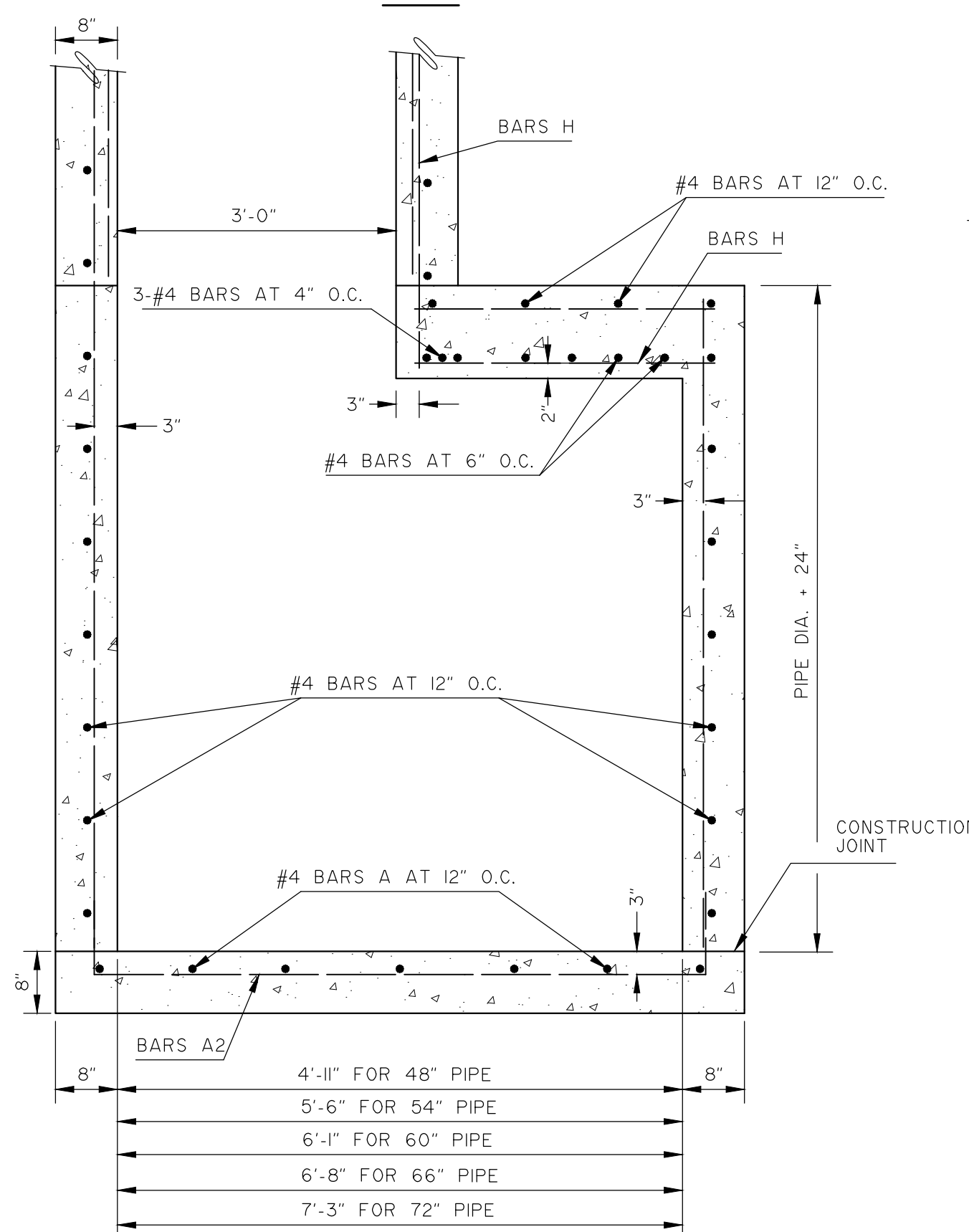
SECTION A-A

NOTE:
FOR PIPES 36" AND UNDER, 48" DIAMETER CIRCULAR MANHOLES MAY BE SUBSTITUTED.

1 TYPE "A" JUNCTION BOX
FOR 18" THRU 42" PIPES

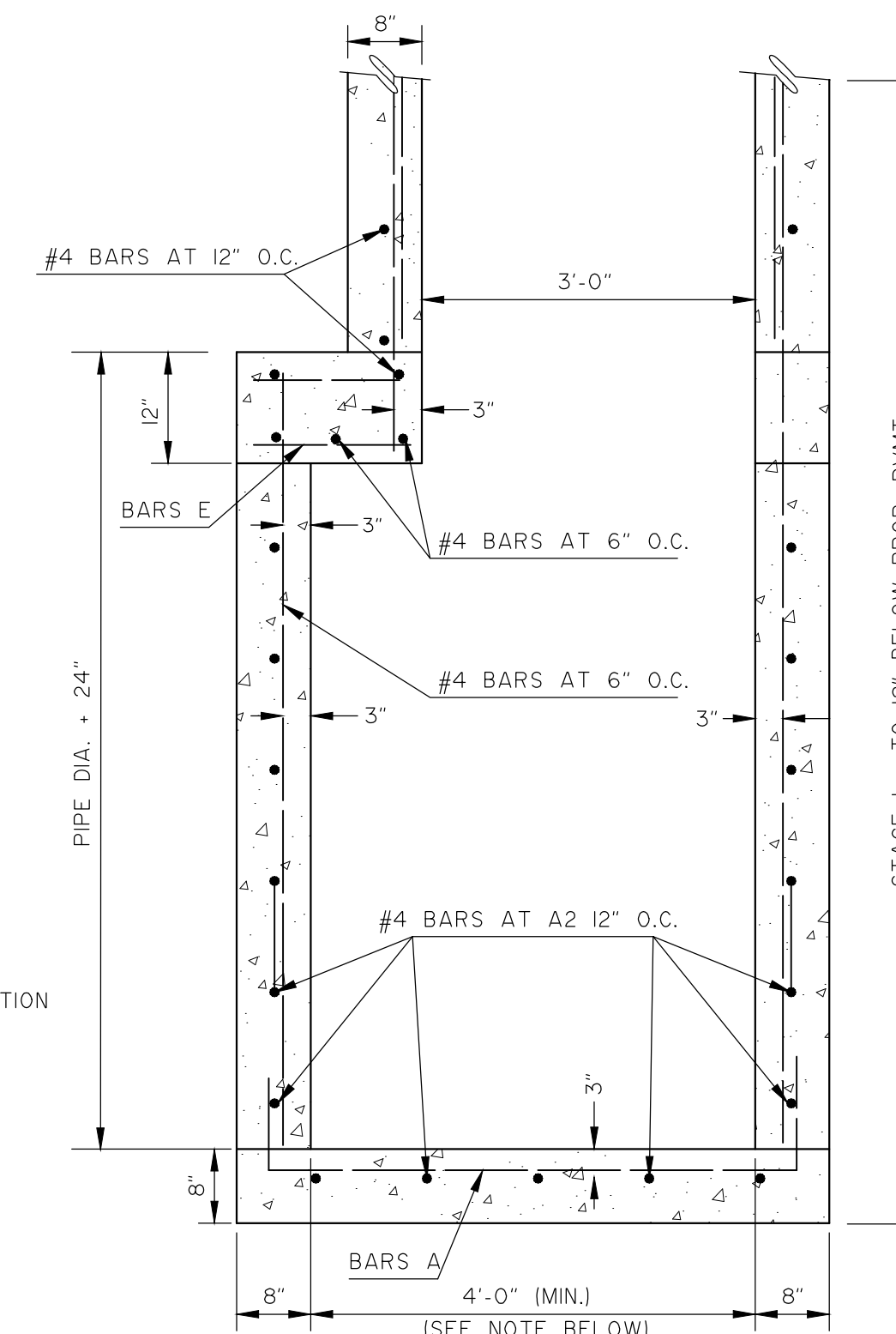


SECTION B-B



SECTION C-C

NOTE:
IF STORM PIPE ENTERS MANHOLE IN SECTION D-D, 4'-0" DIAMETER TO BE VARIED BASED ON SECTION C-C.



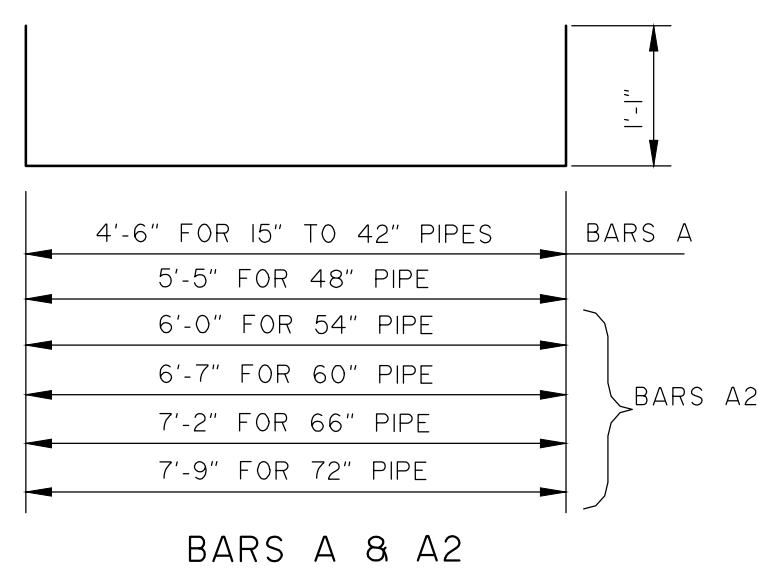
SECTION D-D

2 TYPE "B" JUNCTION BOX
FOR 48" THRU 72" PIPES

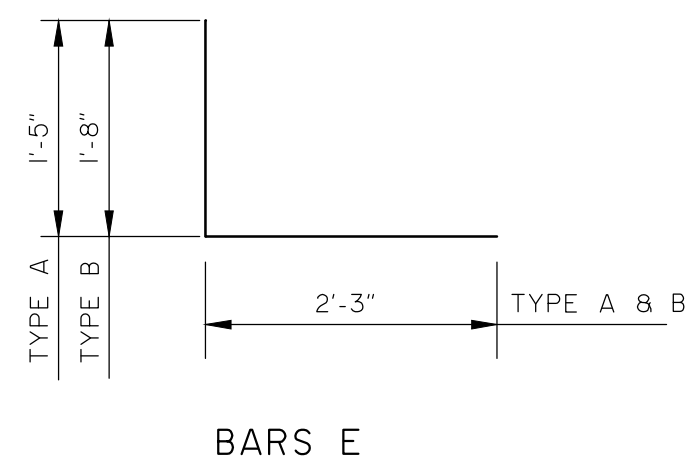
3 GENERAL NOTES:

- A TEMPORARY WOOD COVER SHALL BE INSTALLED AFTER STAGE I IS COMPLETED AND WILL REMAIN IN PLACE UNTIL STAGE II IS BEGUN. STAGE II WILL NOT BE BUILT UNTIL APPROVED BY THE CITY ENGINEER.
- APPROVAL WILL NOT BE NORMALLY GIVEN UNTIL THE SHOULDER BASE HAS BEEN COMPACTED.
- FIELD BEND OR CUT BARS AS REQUIRED TO ACCOMMODATE STORM PIPES.
- DIMENSION RELATING TO REINFORCING STEEL ARE TO CENTERS OF BARS.
- ADJUST LENGTH OF VERTICAL STEEL AS REQUIRED BY THE FLOW LINE CONSTRUCTION JOINT, TO PROVIDE A 20 DIAMETER LAP.
- CHAMFER ALL EXPOSED CORNERS 3/4" EXCEPT WHERE OTHERWISE NOTED.
- INVERTS WILL BE SHAPED WITH GROUT TO CONFORM TO THE SHAPE OF THE PIPES, BUT QUANTITIES USED SHALL NOT BE MEASURED FOR PAYMENT.
- ALL CONCRETE SHALL BE CLASS "A", 3000 P.S.I. MINIMUM.
- LOCATION GIVEN IN PLANS IS TO CENTROID OF BOTTOM STRUCTURE.
- SEE CURB INLET DETAILS FOR MANHOLE RING AND COVER DETAILS.

NOTE: THIS IS SHT. SD-10 OF THE STANDARD CONSTRUCTION DETAILS, ORDINANCE NO. 2013-51 EFFECTIVE DATE: JANUARY 1, 2014



BARS A & A2



BARS E



CITY OF MIDLOTHIAN, TEXAS
DEPARTMENT OF ENGINEERING,
UTILITIES, AND PUBLIC WORKS

STANDARD CONSTRUCTION DETAILS
STORM DRAINAGE

JUNCTION BOX DETAILS

NO.	REVISION:	DATE:	SHEET:
			SD-10