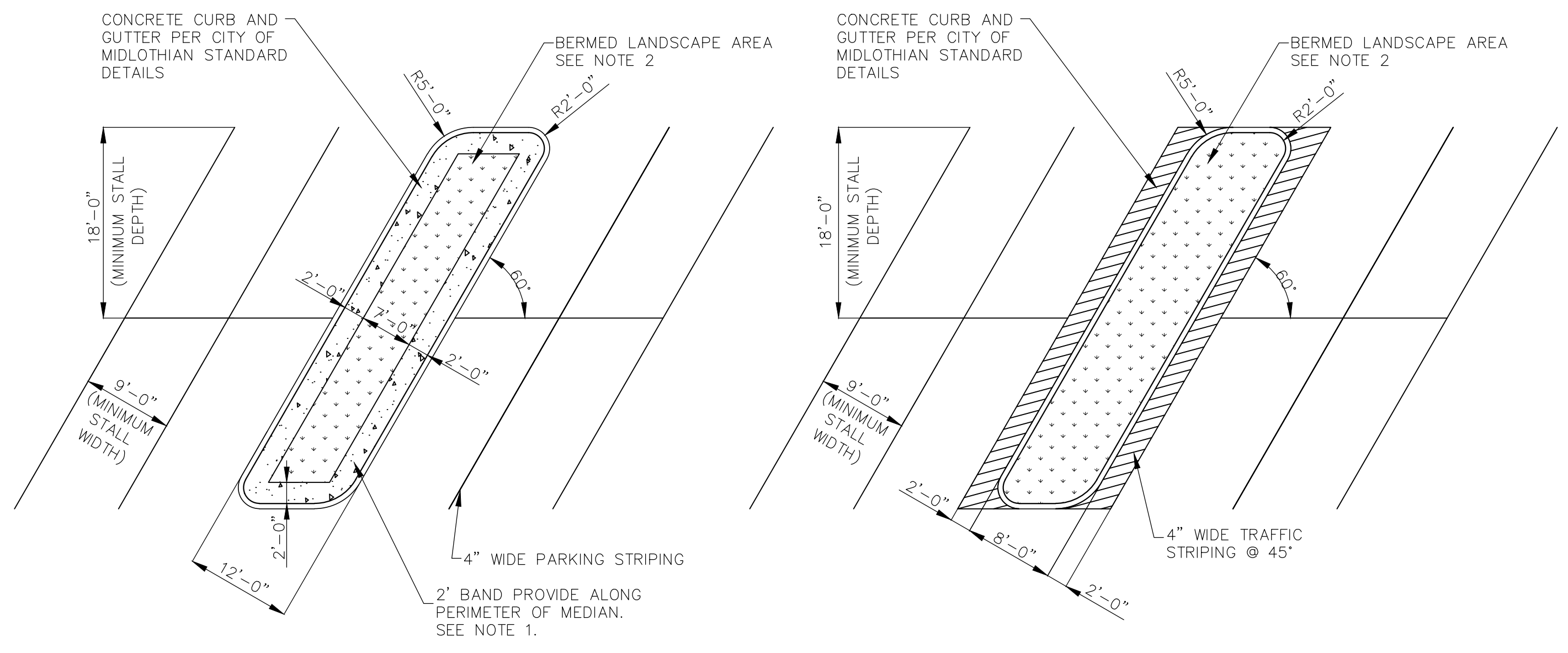


- NOTES:**
- SIGN SHALL BE MOUNTED ON TWO (2) 4"x4"x8'-0" LONG TIMBER POSTS.
 - TIMBER POSTS ARE TO BE BURIED A MINIMUM OF THREE (3) FEET IN THE GROUND WITH CONCRETE ENCASUREMENT FOR SUPPORT ANCHORAGE OR ATTACHED TO A MOVEABLE SKID BASE.
 - SIGN SHALL BE MOUNTED PLUMB AND LEVEL TWO (2) FEET CLEAR ABOVE GRADE.
 - A MINIMUM OF TWO (2) SIGNS WILL BE REQUIRED FOR EACH PROJECT UNLESS OTHERWISE STATED ON THE PROJECT DRAWINGS.
 - ALL COLORS SHALL MATCH CITY ENGINEER'S COLOR DRAWING.

1 CAPITAL IMPROVEMENTS PROJECT SIGN
N.T.S.

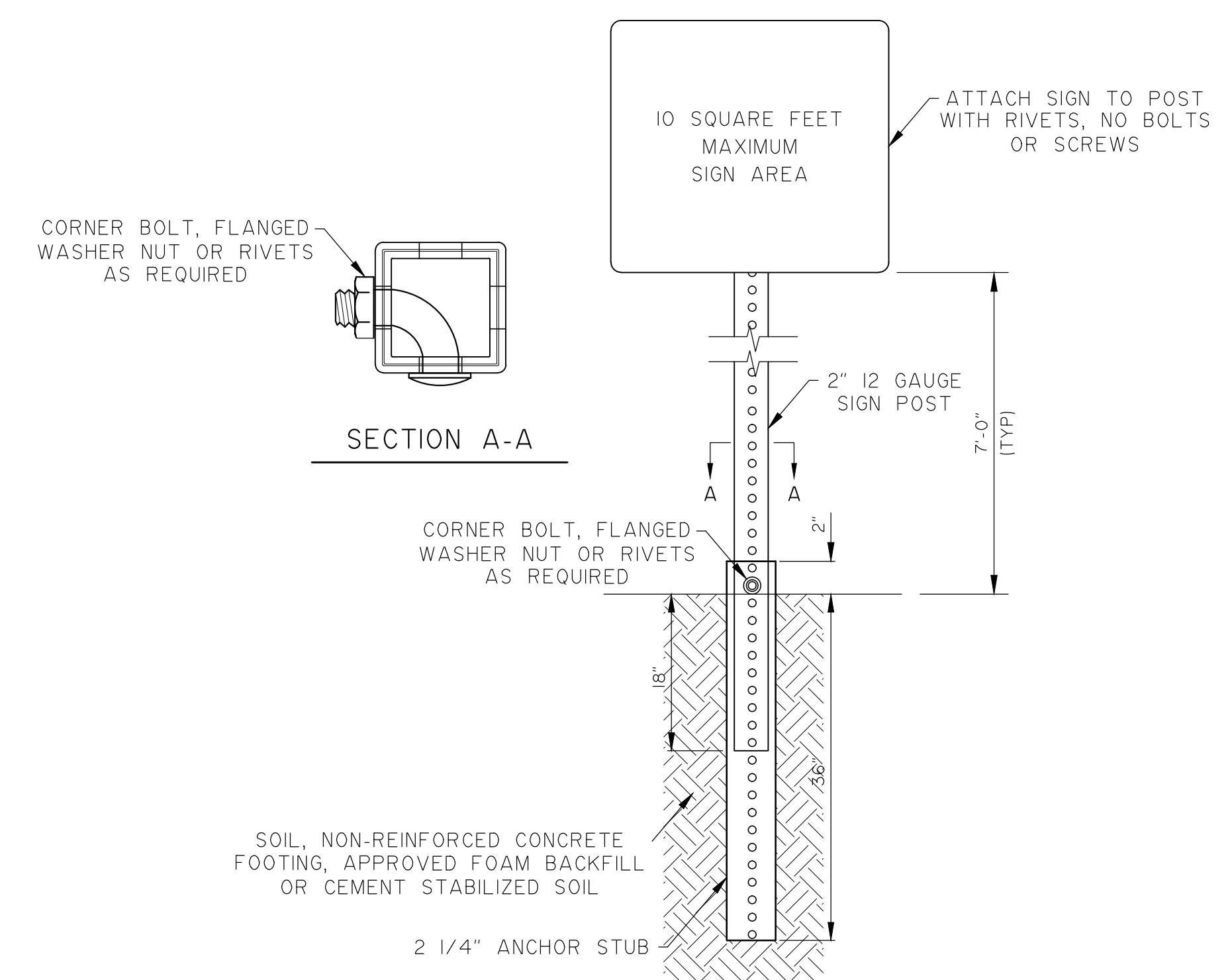


MEDIAN WITH 2' PERIMETER BAND

MEDIAN WITH 2' TRAFFIC STRIPING

- NOTES:**
- 2' PERIMETER BAND TO BE CONSTRUCTED WITH 4" REINFORCED CONCRETE, OR DECOMPOSED GRANITE ON COMPACTED BASE WITH 20 mm WEED BARRIER.
 - MEDIAN LANDSCAPE AREAS SHALL MAINTAIN FULL COVERAGE WITH LIVING LANDSCAPE MATERIAL. BERMS SHALL BE CONSTRUCTED TO PROVIDE AN ELEVATION CHANGE OF 1/2"-2" FOR EVERY 1' OF LANDSCAPE AREA WIDTH.

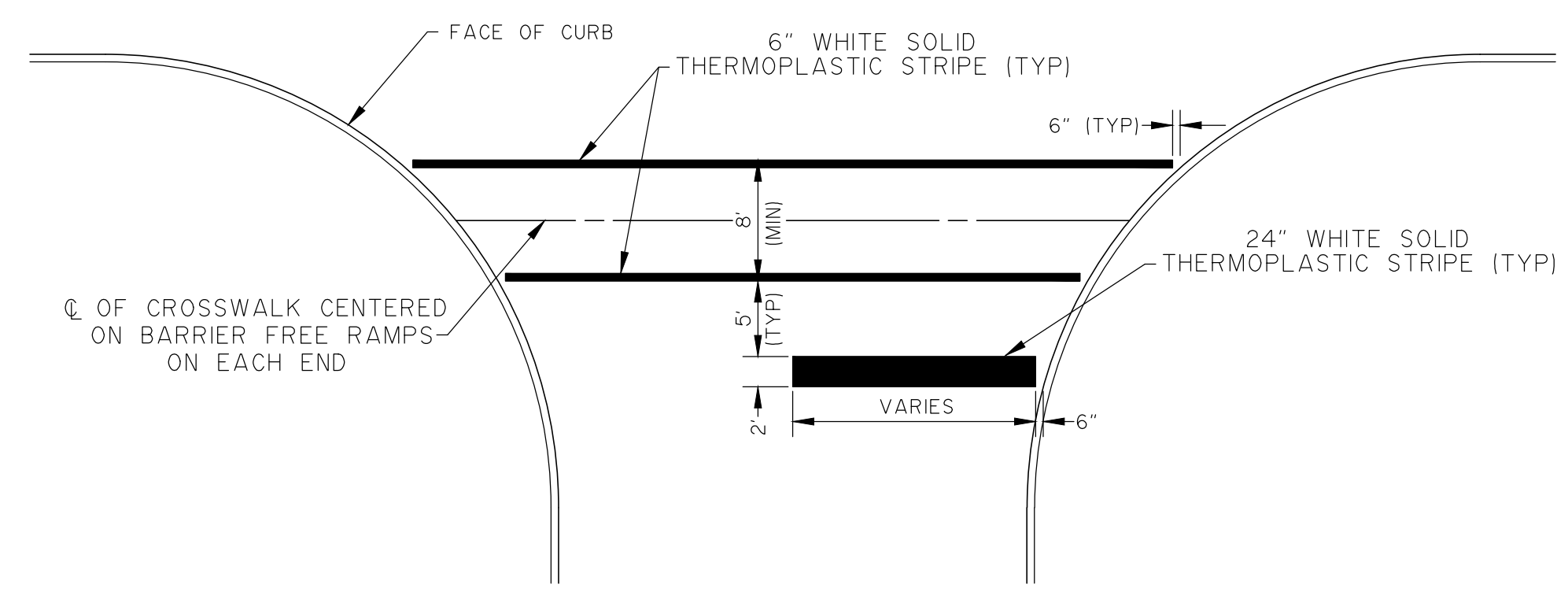
2 TYPICAL PARKING LAYOUTS
N.T.S.



4 PERFORATED SQUARE METAL TUBING (TYPE U)
N.T.S.

- SIGNAGE AND PAVEMENT MARKING NOTES:**
- ALL REGULATORY AND STREET SIGNS, TRAFFIC CONTROL DEVICES AND PAVEMENT MARKINGS SHALL CONFORM TO THE FUNDAMENTAL USE AND DESIGN REQUIREMENTS SET FORTH IN THE LATEST VERSION OF THE TEXAS MUTCD.
 - STREET NAME SIGNS SHALL CONFORM TO CITY REQUIREMENTS RELATING TO THE SIGN BLADE AND LETTERING HEIGHTS AND TYPES, COLOR SCHEME, AND BLOCK DESIGNATIONS.
 - PAVEMENT MARKINGS SHALL COMPLY WITH THE LATEST VERSION OF TXDOT'S "STANDARD SPECIFICATIONS FOR CONSTRUCTION AND MAINTENANCE OF HIGHWAYS, STREETS AND BRIDGES." MARKINGS SHALL BE THERMOPLASTICS (TYPE I MARKING MATERIALS WITH TYPE II MARKING AS A SEALER FOR CONCRETE ROADS AND TYPE III DROP-ON GLASS BEADS). UNLESS OTHERWISE PERMITTED BY THE CITY, IF TRAFFIC PAINT IS PERMITTED, IT SHALL CONSIST OF TYPE II MARKING MATERIALS WITH TYPE III DROP-ON GLASS BEADS.

NOTE: THIS IS SHT. SD-8 OF THE STANDARD CONSTRUCTION DETAILS, ORDINANCE NO. 2013-51 EFFECTIVE DATE: JANUARY 1, 2014



3 TYPICAL CROSSWALK & STOP BAR DETAIL
N.T.S.



CITY OF MIDLOTHIAN, TEXAS DEPARTMENT OF ENGINEERING, UTILITIES, AND PUBLIC WORKS			
STANDARD CONSTRUCTION DETAILS PAVING			
PROJECT SIGN & PAVEMENT MARKING DETAILS			
NO:	REVISION:	DATE:	SHEET:
			SD-8